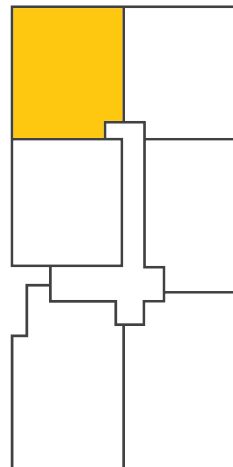


APARTMENT NINE



AREA TABLE	
APARTMENT	87 m ²
BALCONY	12 m ²
TOTAL	99 m ²



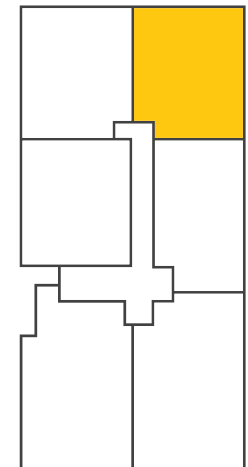
SALISBURY ST



APARTMENT TEN



AREA TABLE	
APARTMENT	91 m ²
BALCONY	12 m ²
TOTAL	103 m ²



SALISBURY ST

